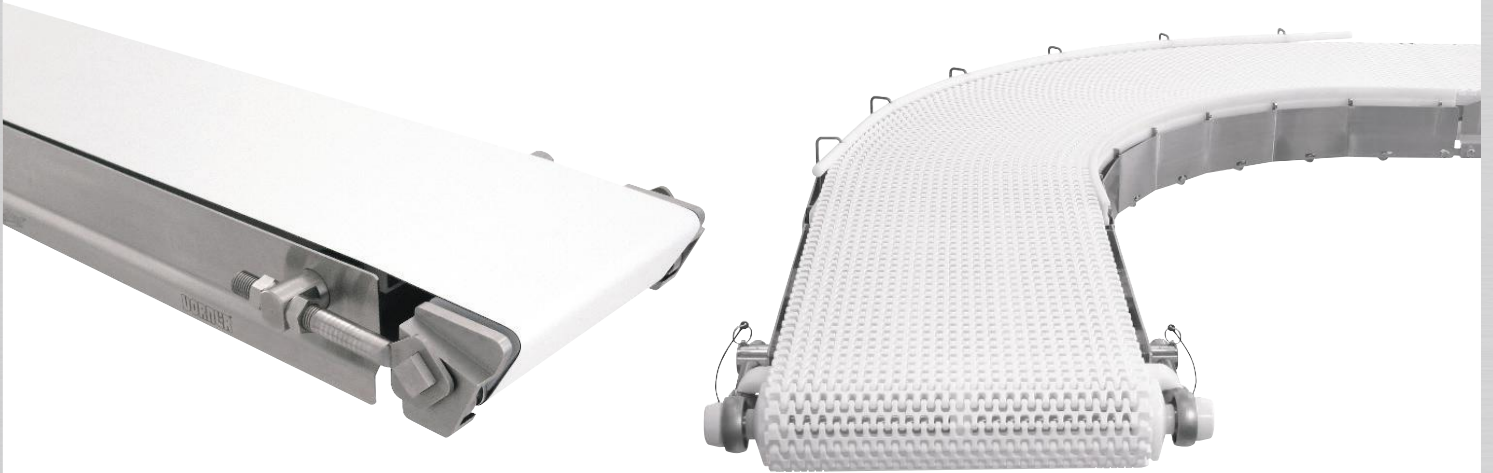


Industry Leading  
Hygienic Designs

Fast, Simple to Use  
Online Configurator

Rapid Deliveries

USDA  
Certified Conveyors



*Aqua***Pruf**<sup>®</sup>

# 7400 & 7600 SERIES CONVEYORS

Improving Food Safety with  
Hygienically Engineered Stainless Steel Conveyors

**DORNER**<sup>®</sup> 



## Dorner AquaPruf Conveyors are Best for:

- Processed Foods
- Dairy
- Nutraceuticals
- Raw Meats & Poultry
- Fruits & Vegetables
- Pet Foods
- Pharmaceutical
- Ready-to-Eat Foods
- And More!

### Sizes & Measurements

- 6" - 60" (widths)
- 36" - 999" (lengths)

### Loads & Speeds

- 20 lbs per square foot
- 328 fpm

### 7400 Modular Belt Options

- Flat Modular Belt
- Friction Top
- Cleated
- Curve



Patented Sprocket  
Alignment Key



Flat Modular Belt

### 7600 Belt Options

V-Guided and Positive Drive  
Belt Options

- Flat Belt
- Cleated
- Sidewall Cleated

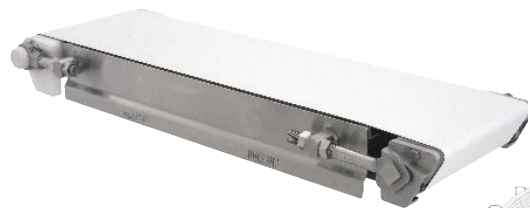


Positive Drive

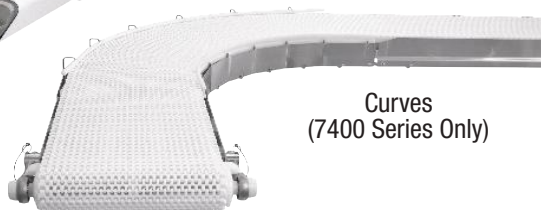


Flat Belt

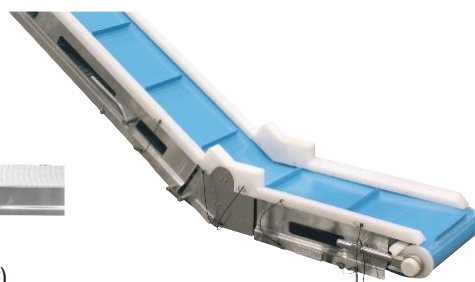
### Configurations



Straights



Curves  
(7400 Series Only)



LPZ (Z-Frames), Nose-Overs &  
Horizontal to Inclines

### Options



Nose Bar Transfers



Belt Lifters &  
Frame Cut-Outs



Belt Scrapers

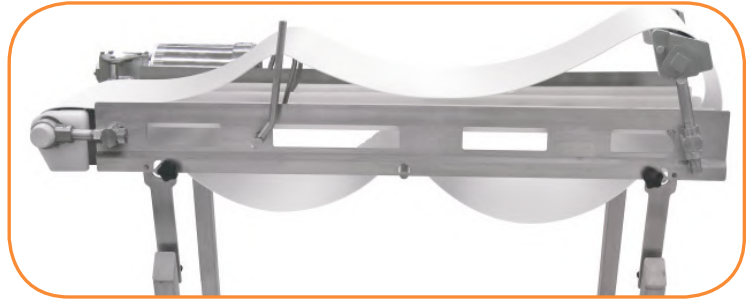


Clean-in-Place

Other options available including Chutes, Drip Pans, Guiding, Hoppers and more.

## Hygienic Design

- Tool-Less Disassembly. Cleaning prep in under a minute, complete disassembly in less than 3 minutes
- Optional Frame Cut-outs and Belt Lifters for continuous access to inside of the conveyor
- Tip-up Tails allow for quick release of belt tension
- Quick release stands for fast belt removal
- Continuous TIG all welded 304 Stainless Steel frame



## AquaPruf Ultimate

- Highest level of sanitation
- USDA red meat and poultry certified conveyors
- USDA approved belting and plastic components
- Meets USDA, NSF and AMI design specifications
- Tool-less pull pin removal of tail assemblies
- #4 polish on all internal frame members
- Solid cross members
- TIG welded stand-offs keep fasteners out of the food zone

**AquaPruf®**  
**ULTIMATE**



## Engineered Solutions

- Dorner's Engineered Solutions Group can tailor fit AquaPruf Conveyors for specific applications and product handling requirements.
- With a custom-designed conveyor system in place, your products are processed faster, your services are delivered quicker, and your profits are increased with the help of highly specialized engineering.
- Solutions include:
  - Routing/Diverting/Laning/Merging
  - Singulating/Rotating
  - Accumulation/Buffering
  - Pacing/Gapping
  - Traffic Control/Flow
  - Orientating/Positioning
  - And More!



## The Benefits of Dorner AquaPruf Conveyors

### Industry Ready

- Designed and manufactured to food equipment standards
- BISSC & USDA certified conveyors
- FDA approved materials and components

### Delivers Fast

- Dorner sets the industry standard for rapid delivery
- Sanitary conveyors ship in as little as 10 business days
- Industry leading cleaning preparation time

At Dorner our mission is to **Transform Conveyor Automation** by providing cutting edge solutions with best-in-class support. It's that commitment and history of proven excellence that has made the Dorner Brand a recognized leader in precision conveyors for over 50 years. With our complete line of customizable stainless steel and aluminum conveyor automation systems, we have the right solution for you!



## 1X Series

The 1X Series Line is designed for small part handling and transfers where space is a premium.

### 1X Series Family:

- Flat Belt
- Aluminum Frame
- Widths to 10"
- Loads to 15 lbs
- Speeds up to 80 fpm



## 2X Series

The 2X Series Line is engineered for small to medium sized parts, precision applications and flexible layouts.

### 2X Series Family:

- Flat Belt
- Cleated Belt
- Modular Belt
- Precision Move
- SmartFlex®
- Aluminum Frame
- Widths to 24"
- Loads to 200 lbs
- Speeds up to 400 fpm
- Curves
- Z-Frame Elevators



## 3X Series

The 3X Series Line is designed for medium to heavy sized parts, precision applications, bulk handling and flexible layouts.

### 3X Series Family:

- Flat Belt
- Cleated Belt
- Modular Belt
- Flexible Chain
- Precision Move
- Aluminum Frame
- Widths to 60"
- Loads to 1000 lbs
- Speeds up to 600 fpm
- Curves
- Z-Frame Elevators



## 7X Series

The 7X Series Stainless Steel Line is engineered for small to heavy product requiring various levels of sanitary design and flexible layouts.

### 7X Series Family:

- AquaPruf® + AquaGard®
- Flat Belt
- Cleated Belt
- Modular Belt
- Flexible Chain
- Vertical Belt Technology
- Stainless Steel Frame
- Widths to 52"
- Loads to 750 lbs
- Speeds up to 400 fpm
- Curves
- Z-Frame Elevators

### NEED SOMETHING DIFFERENT?

DORNER'S **ENGINEERED SOLUTIONS GROUP** PROVIDES EXACTLY WHAT YOU NEED FOR YOUR SPECIFIC APPLICATION. FROM MODIFIED STANDARD CONVEYORS TO COMPLETE CUSTOM DESIGNS.

### LOOKING FOR AFTER SALE SUPPORT?

DORNER'S **SERVICES TEAM** PROVIDES COMPLETE SUPPORT FROM REPLACEMENT PARTS TO INSTALLATION AND MAINTENANCE SERVICES.



DORNER MFG. CORP.  
PO Box 20 • 975 Cottonwood Ave.  
Hartland, WI 53029 USA

INSIDE THE USA  
TEL: 800.397.8664  
FAX: 800.369.2440

OUTSIDE THE USA  
TEL: 262.367.7600  
FAX: 262.367.5827

[www.dorner.com](http://www.dorner.com)  
[info@dorner.com](mailto:info@dorner.com)

